



# AUTHENTICS 500

Hi-fidelity smart home speaker with Wi-Fi, Bluetooth and Voice Assistants with retro design.



## Retro design with Dolby Atmos® music performance

Fill any room with cutting-edge sound and striking retro style with the JBL Authentics 500. From its Quadrex grille to its custom leather-like enclosure, the speaker was inspired by JBL's iconic 1970s designs, updated for the 21st century with the latest sound and control technologies. Immerse yourself in high-definition lifelike sound with Dolby Atmos® Music thanks to the Authentics 500's aluminum tweeters and patented SlipStream™ bass port. With Google Assistance and Amazon Alexa available simultaneously\*, you can play your favorite music, control your smart home devices, and more, hands-free, using just your voice.



\*Amazon Alexa and Google Assistant may not be available in all countries or languages. Availability, features, and functionality may vary.

Please check here for your country/language: <https://www.jbl.com/services-availability.html>

## Features

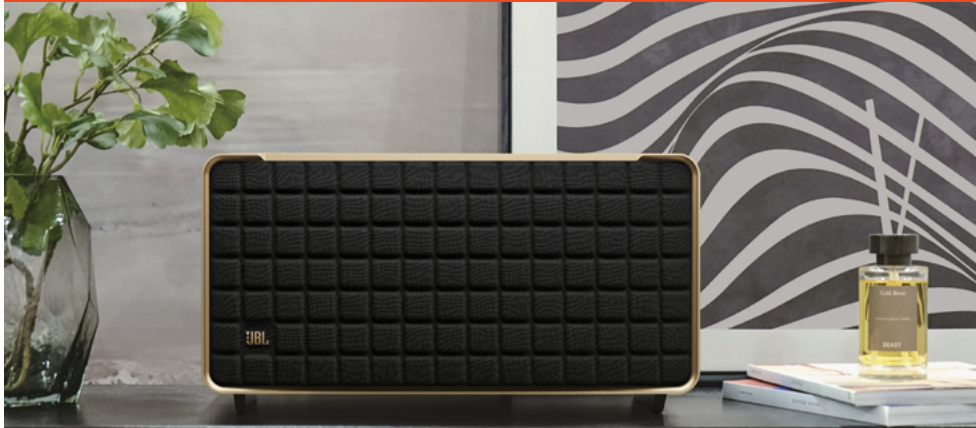
- ▶ Superb sound and performance with Dolby Atmos® Music
- ▶ Inspired by retro design
- ▶ Music streaming services via built-in Wi-Fi
- ▶ Voice assistants\*, simultaneously on one device.
- ▶ Seamless Bluetooth pairing
- ▶ Intuitive controls and JBL One app
- ▶ Multi-Room Playback
- ▶ Automatic self tuning
- ▶ Made in part with 100% recycled fabric, 85% recycled plastics and 50% aluminum





# AUTHENTICS 500

Hi-fidelity smart home speaker with Wi-Fi, Bluetooth and Voice Assistants with retro design.



## Features and Benefits

### Superb sound and performance with Dolby Atmos® Music#

270 watts of 3.1 channel sound, with virtual Dolby Atmos® create a lifelike musical experience that makes you feel like you're hearing your music live—right from the front row. Three 25mm tweeters and three 2.75" midrange woofers provide so much clarity that every detail of your favorite song sounds brand new, while a 6.5" down firing subwoofer and the patented SlipStream™ bass port extend the low end to a new level of bass that you can feel. Dolby Atmos® Music content is available from compatible streaming services in the JBL One app.

### Inspired by retro design

The JBL Authentics 500 delivers the iconic style inspired by classic JBL heritage designs, for a look that complements any room, easily filling even the largest space with superior JBL sound. And the speaker's premium aluminum frame, custom leather-like enclosure, and reimagined Quadrex grille really show the attention we paid to each visual detail, right down to the special JBL signature pattern surrounding the downfiring woofer.

### Music streaming services via built-in Wi-Fi

Experience everything from podcasts to internet radio in stunning high definition. Or stream music through AirPlay, Alexa Multi-Room Music (MRM), Chromecast built-in™, and Spotify Connect and leave the room or take a call without the music being interrupted. The Wi-Fi connection ensures your speaker gets automatic software and feature updates.

### Voice assistants\*, simultaneously on one device.

Google Assistant and Amazon Alexa are available simultaneously\*. This gives you the most freedom and convenience to control more smart home devices, play from more music streaming services, and get the most hands-free help from either assistant at any given time.

### Seamless Bluetooth pairing

Seamlessly share playlists by pairing the JBL Authentics 500 with any Bluetooth devices.

### Intuitive controls and JBL One app

Personalize your audio with intuitive on-speaker controls that adjust volume, bass, and treble levels. Use Alexa or Google Assistant to control your device with your voice. Or use the JBL One app for even more options to customize EQ, settings, and find your new favorite song using the integrated music services.

### Multi-Room Playback

Place multiple JBL Authentics speakers throughout your home for your next gathering. Using the Google Home app or Amazon Alexa app, you can set the mood in every room by connecting two or more speakers to a single playlist and get everybody moving to the same beat

### Automatic self tuning

Get great sound anywhere you want. The speaker automatically calibrates and optimizes audio performance for every location each time you power it up.

### Made in part with recycled materials

The Authentics 500 speaker is made with 100% recycled fabric, 85% recycled plastics and 50% aluminum, and comes in a FSC-certified carton box printed with soy ink.

#Availability of Dolby Atmos Music may depend on subscription plan.

\*Amazon Alexa and Google Assistant may not be available in all countries or languages. Availability, features, and functionality may vary.

Please check here for your country/language: <https://www.jbl.com/services-availability.html>

## Technical Specifications

### General Specifications

- ▶ Model: Authentics 500
- ▶ Sound system: 3.1 & Dolby Atmos Music
- ▶ Power supply: 100 - 240V AC, ~ 50/60Hz
- ▶ Total speaker power output (Max @ THD 1%): 270W
- ▶ Transducer: 3 x 25mm aluminum dome tweeter + 3 x 2.75" midrange + 6.5" subwoofer
- ▶ Networked standby power: < 2.0 W
- ▶ Operating temperature: 0 °C - 45 °C

### Audio Specifications

- ▶ Frequency response: 40Hz - 20kHz (-6dB)
- ▶ Audio inputs: 1 Audio in, Bluetooth/WiFi, Ethernet and USB (USB playback is available in US version. For other versions, USB is for Service only.)

### USB Specifications

- ▶ USB port: Type C
- ▶ USB rating: 5V DC, 1A
- ▶ Supporting formats: mp3, WAV
- ▶ MP3 codec: MPEG 1 Layer 2/3, MPEG 2 Layer 3, MPEG 2.5 Layer 3
- ▶ MP3 sampling rate: 16 - 48 kHz
- ▶ MP3 bitrate: 80 - 320 kbps

### Wireless specifications

- ▶ Bluetooth version: 5.3
- ▶ Bluetooth profile: A2DP 1.3.2, AVRCP 1.5
- ▶ Bluetooth transmitter frequency range: 2400 MHz - 2483.5 MHz
- ▶ Bluetooth transmitter power: <17 dBm
- ▶ Wi-Fi network: IEEE 802.11 a/b/g/n/ac/ax (2.4GHz/5GHz)
- ▶ 2.4G Wi-Fi transmitter frequency range: 2412 - 2472 MHz (2.4 GHz ISM Band, USA 11 Channels, Europe and others 13 Channels)
- ▶ 2.4G Wi-Fi transmitter power: <20 dBm
- ▶ 5G Wi-Fi transmitter frequency range: 5.15 - 5.35GHz, 5.470 - 5.725GHz, 5.725 - 5.825GHz
- ▶ 5G Wi-Fi transmitter power: <23 dBm

### Dimension Specifications

- ▶ Dimensions (W x H x D): 447 x 240 x 255.7 mm / 17.60" x 9.45" x 10.07"
- ▶ Weight: 7.8 kg / 17.20 lbs
- ▶ Packaging dimensions (W x H x D): 515 x 322 x 315 mm / 20.3" x 12.7" x 12.4"
- ▶ Packaging Weight: 11.4 kg / 25.1 lbs

## What's in the box

- 1x JBL Authentics 500
- 1x Power cable
- 1x Quick start guide
- 1x Safety sheet
- 1x Warranty card



HARMAN International Industries, Incorporated  
8500 Balboa Boulevard, Northridge, CA 91329 USA

[www.jbl.com](http://www.jbl.com)

© 2023 HARMAN International Industries, Incorporated. All rights reserved. JBL is a trademark of HARMAN International Industries, Incorporated, registered in the United States and/or other countries. Features, specifications and appearance are subject to change without notice. Google and Chromecast built-in are trademarks of Google LLC. Amazon, Alexa and all related marks are trademarks of Amazon.com, Inc. or its affiliates.